



**VISALAKSHI HOUSING PROJECTS**

— VISALAKSHI —  
**NAGAMA SERENITY**  
BOUTIQUE HOMES  
OFF. HENNUR MAIN ROAD



These are an artist's impression only and not the actual images.

Rera Number: PRM/KA/RERA/1251/446/PR/040925/008059



## ABOUT

Discover a haven of refined living off Hennur Road, where timeless elegance meets tranquility. Designed in Roman architectural style, this sanctuary offers more than just a home, it's a retreat for the soul, meticulously crafted to promote relaxation and harmony.



## VISALAKSHI HOUSING PROJECTS

Visalakshi Housing Projects embarked upon its journey in 2004. With a wealth of diverse contractual engagements, gathering profound expertise.

At the heart of our philosophy lies an unyielding dedication to providing exceptional residential homes distinguished by unmatched excellence. We pride ourselves in maintaining a careful equilibrium between superior quality and attractive pricing.

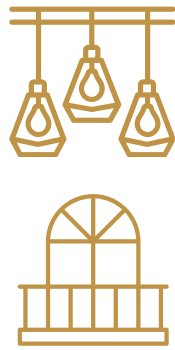


These are an artist's impression only and not the actual images.



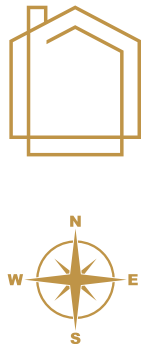
EXCEPTIONAL AMENITIES,  
& HIGHLIGHTS  
Indulge in a World of Premier Comforts

GROUND FLOOR  
PLAN



Premium specifications  
for all fixtures & fittings

Elegant dining area with  
spacious balcony deck



63 exclusive low density  
homes with no common  
walls

100% Vaastu compliant for  
harmony and prosperity

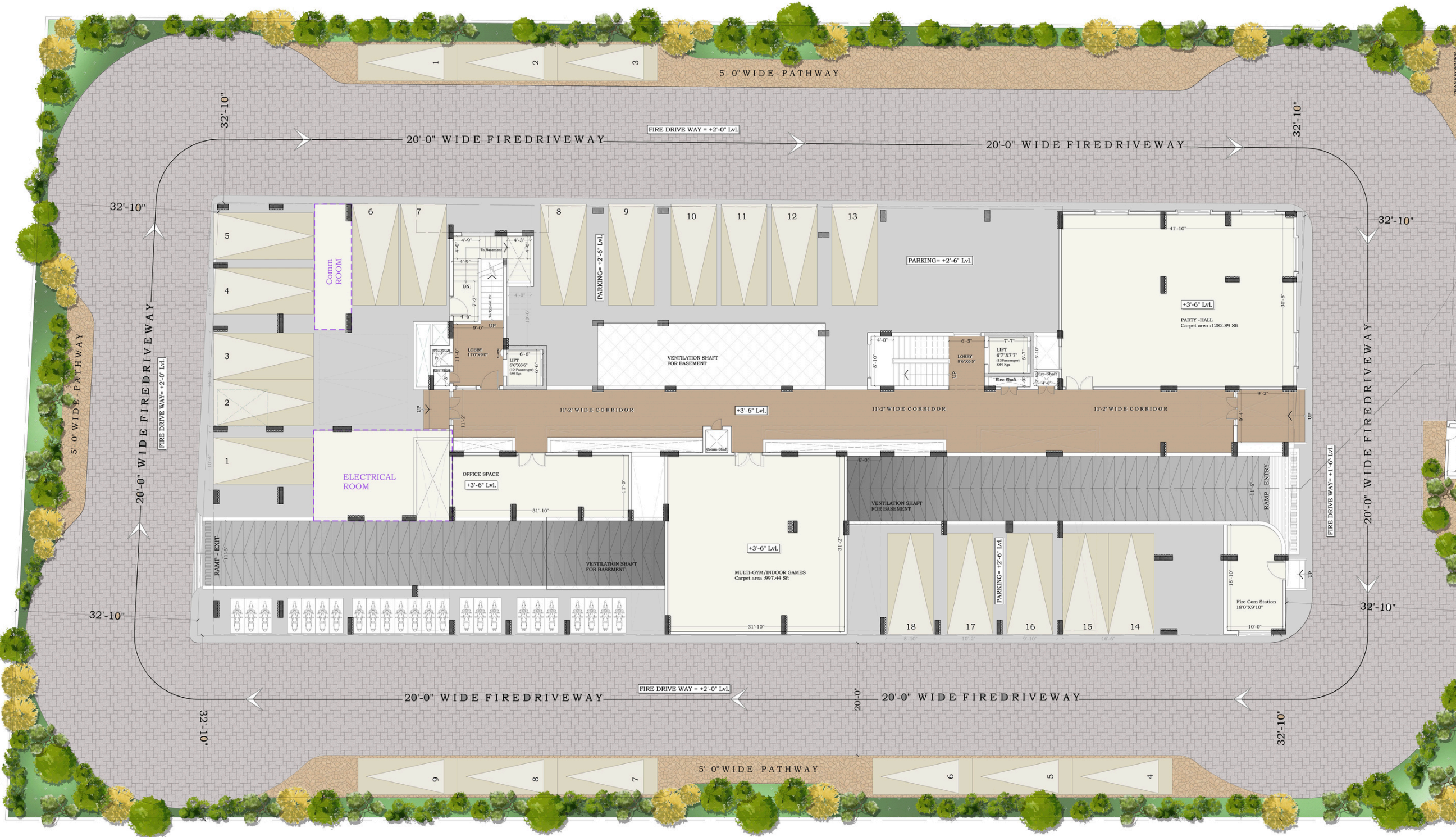


Efficiently planned  
tower with Basement  
+Ground + 9 floors

Excellent day lighting &  
cross ventilation

FACILITIES

- Smart Main Door Lock
- Rain water harvesting
- Provision for round the clock security
- CCTV for 24 hours surveillance.
- Fire fighting system
- Visitors' two wheeler and car parking



AMENITIES



Entrance  
lobby



Gymnasium



Table  
Tennis



Party Hall



Children's  
Play Area



Swimming  
Pool



CC & OC Project



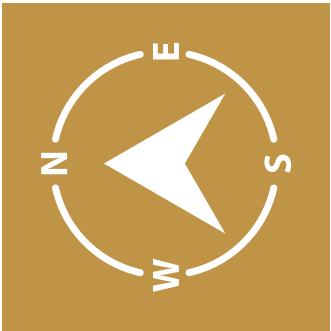
BBMP Approved



VISALAKSHI  
NAGAMA SERENITY  
BOUTIQUE HOMES



# TYPICAL FLOOR PLAN



Thoughtfully Designed for Modern Living



# SPECIFICATIONS



## STRUCTURE

Earthquake Resistant, seismic zone - II compliant RCC structure. All walls constructed with solid blocks.



## PAINTING

Internal: 2 coats of putty and 1 coat of primer, 2 coats of emulsion paint with roller finish for walls and ceiling.  
External: 1 coat primer and 2 coats of weather shield paint.



## DOORS

Main Door: Teak wood frame with both sides Veneer with hardware.

Bedrooms Doors: Teakwood door frame with laminate and flush shutter with hardware.

Toilet Doors: Teakwood door frame with laminate and waterproof flush shutter with hardware.



## WINDOWS

UPVC sliding window doors for all windows with plain sheet of glass and provision for mosquito mesh and MS-Safety Grill is provided.



## TILES

Living/Dining/Bedrooms/Kitchen: Vitrified Tiles

Toilets/Balconies/Utility:Anti skid ceramic tiles.

Corridors/Staircases: Vitrified tiles/Granite.

Toilets: Ceramic Tile Dado upto 7 feet height.



## PLUMBING

Sanitary fixtures and Chromium Plated fittings in all toilets are of Jaguar or equivalent make.



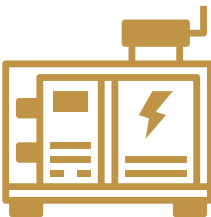
## UTILITY

Sink with granite platform is provided.  
Electrical and Plumbing points provision for washing machine.



## KITCHEN

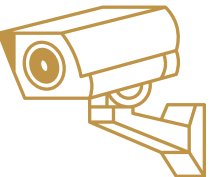
Electrical and Plumbing points provided for Home Appliances.



## POWER BACKUP

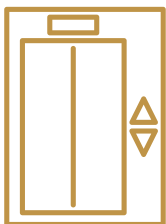
24 hours stand by power of 1Kw to run lights, fans, T.V. etc.

100% Power back up in common areas



## SECURITY SYSTEM

24 hours CCTV surveillance in all exit and entry points of the common areas,



## LIFTS

2 NOS of 10 &13 passenger capacity conformed to ISI standards



## ELECTRICAL

LT Power: 4Kw Split AC Power provision in all bedrooms, Earth leakage Circuit Breaker(ELCB) for safety provided for each flat. Miniature Circuit Breaker (MCB) for each room provided at the main distribution box within each flat.

Switches: Modular electrical switches of Panasonic or equivalent make.

Electrical wires; Fire resistant wires of Anchor or equivalent make.

TV Points: Provision in the living room and in the master bedroom.

# PRIME LOCATION, UNPARALLELED CONNECTIVITY



## CONNECTIVITY

- HEBBAL
- MG ROAD
- AIRPORT
- RAILWAY STATION - SIR M. VISVESVARAYA TERMINAL
- KR PURAM
- NAGAVARA METRO STATION



## TECH PARKS

- MANYATA TECH PARK
- RMZ GALLERIA
- BRIGADE MAGNUM
- BHARATIYA CITY
- KIRLOSKAR BUSINESS PARK
- DIVYASREE AVANCE



## HANGOUT

- BHARATIYA CITY MALL
- MALL OF ASIA
- RMZ GALLERIA
- DECATHALON
- ELEMENTS MALL
- DMART
- PHOENIX MARKET CITY
- ORION MALL
- BYG BREWSKI
- OIA



## SCHOOLS

- ROYAL CONCORDE
- NEW HORIZON INTERNATIONAL
- RYAN INTERNATIONAL ACADEMY
- RASHTROTHANA VIDYA KENDRA
- VIBGYOR HIGH SCHOOL
- BANGALORE INTERNATIONAL SCHOOL
- ORCHIDS INTERNATIONAL SCHOOL
- RIVERSTONE INTERNATIONAL SCHOOL
- LEGACY SCHOOL
- GREENFIELD PUBLIC SCHOOL
- CHAMAN BHARTIYA SCHOOL
- SAMSIDH INTERNATIONAL SCHOOL



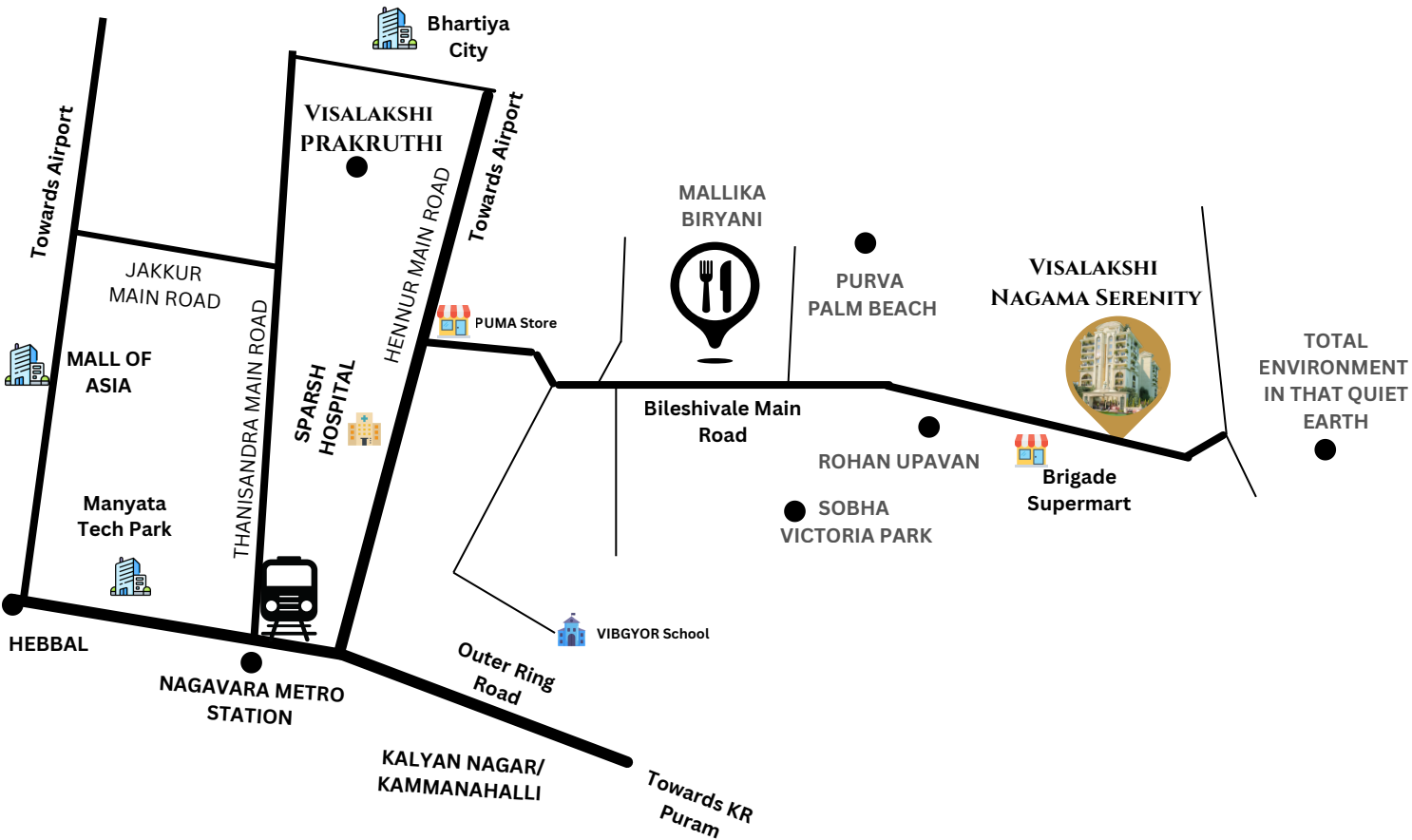
## COLLEGES

- BMSIT
- MANIPAL ACADEMY OF BANKING
- REVA
- NITTE
- INDO ASIAN ACADEMY
- KRISTU JAYANTHI COLLEGE
- CMR UNIVERSITY
- SIR MVIT



## MEDICAL FACILITIES

- PROLIFE MULTI SPECIALTY HOSPITAL
- MANIPAL HOSPITAL
- MOTHERHOOD HOSPITAL
- ASTER CMI HOSPITAL
- BAPTIST HOSPITAL
- 2050 HEALTHCARE
- REGAL HOSPITAL
- SPARSH HOSPITAL



NOTE: All the above detail are taken from Google maps and this map is not to scale.



# OUR LEGACY OF EXCELLENCE

## Showcasing a History of Superior Craftsmanship

Visalakshi Housing Projects delivers quality living with luxury and style. Our high standards are constantly elevated by an experienced team committed to customer satisfaction and transparency.



### Visalakshi Prakruthi

Off. Thanisandra Main Road



Himapriya  
Coffee board Layout



Sansita Pride  
Off. Thanisandra



Rajatha Greens  
Nagavara Main Road

## VISALAKSHI HOUSING PROJECTS

Nagama Serenity, Bileshivale Main Road, Bengaluru 560077



PHONE  
+91 8095535577/88



EMAIL  
nagamaserenity@gmail.com



WEBSITE  
www.visalakshi.in

*Disclaimer: The brochure is conceptual and not a legal offer. The promoters have the right to modify or add any specifications or plans listed. The furniture layout serves as a general representation.*